

State of Wyoming Corner Record

(In compliance with the CORNER PERPETUATION AND FILING ACT, Wyoming Statutes, 1977, Section 36-11-101, et. seq., and the Rules and Regulations of the Board of Registration for Professional Engineers and Professional Land Surveyors)

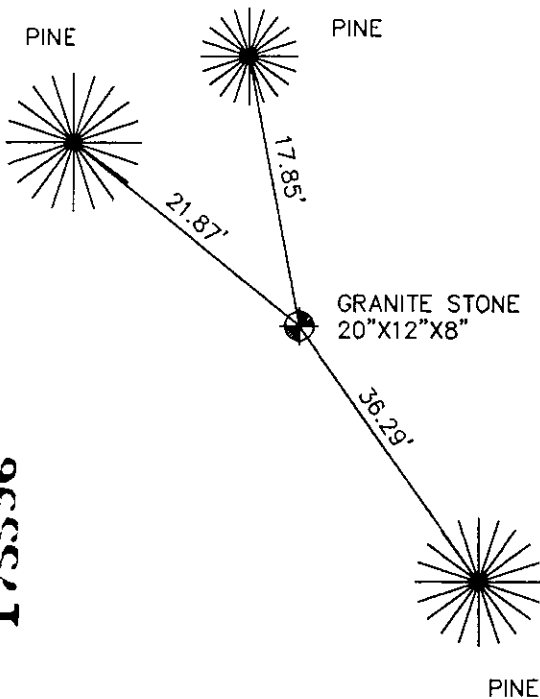
Reverse side of this form may be used if more space is needed.

Record of original survey and citation of source of historical information (if corner is lost or obliterated). Description of corner monumentation evidence found and/or monument and accessories established to perpetuate the location of this corner. Sketch of relative location of monument, accessories, and reference points with course and distance to adjacent corner(s) (if determined in this survey). Method and rationale for reestablishment of lost or obliterated corner.

FOUND: FOUND GRANITE BOULDER 20" X 12" X 8" ON EAST SIDE OF MOUNTAIN.

REFERENCES: FOUND STONE ON EAST SIDE OF MOUNTAIN IN LINE WITH A FENCE APPROXIMATELY 1/4 OF A MILE AWAY RUNNING EAST. SET 60d SPIKES IN BASE OF TREES FOR REFERENCE.

GLO RECORD: SET GRANITE BOULDER 20" X 12" X 8" FOR CORNER TO SECTIONS 23,24,25,&26.



LARAMIE COUNTY CLERK
CHEYENNE, WY.

'96 JAN 12 AM 8 38

175596

Date of Field Work: 10-20-94

Office Reference: 94193

CROSS INDEX DIAGRAM

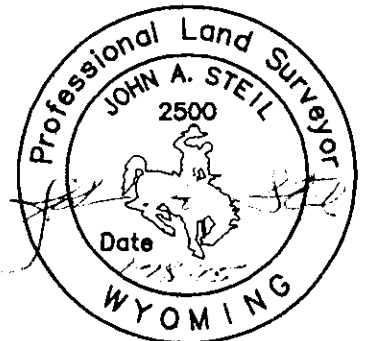
A	1	2	3	4	5	6	7	8	9	10	11	12	13	14	15	16	17	18	19	20	21	22	23	24	25
B																									
C	6				5				4					3					2						
D																									
E																									
F																									
G	7				8				9					10					11						
H																									
I																									
J																									
K																									
L	18				17				16					15					14						
M																									
N																									
O																									
P	19				20				21					22					23						
Q																									
R																									
S																									
T	30				29				28					27					26						
U																									
V																									
W																									
X	31				32				33					34					35						
Y																									
Z																									

Firm/Agency, Address

STEIL SURVEYING SERVICES, LLC
1102 WEST 19th STREET
CHEYENNE WY 82001

Telephone Number: (307) 634-7273

This corner record was prepared by me or under my direction and supervision.
SEAL & SIGNATURE



BOOK 1415

Corner Name: NORTHWEST SECTION CORNER Section: 25 T. 13N R. 70W ; 6th P.M. Cross-Index No.: R-21

SBRPEPLS/PLSW: March 1994

0946